

# Walking Paths

 **Main Loop**

 **Cornwall's Point Loop**

 **St. Brendan's Loop**

 **Hickory Lodge Loop**

 **4 Cemeteries Loop**



**Rockport River Rats**  
c1904



*Watch for these  
Pathway Markers to  
guide you along the way!*

North



-  Interpretive sign
-  Information kiosk
-  Pathways Sign

## Points of Interest

- 1 Island View Hotel (1880)
- 2 Cenotaph War Memorial (1944)
- 3 Cornwall's Store & Home (1868)
- 4 Rockport - A River Community
- 5 Rockport Cheese Factory (1857)
- 6 Statue of Our Lady of Peace (1919)
- 7 St. Brendan's Catholic Church (1891)
- 8 Cornwall's Grove
- 9 Stations of the Cross
- 10 Fitzsimmons House (1907)
- 11 Church of the Redeemer (1896)
- 12 Hickory Lodge (1894-1951)
- 13 Recreational Path
- 14 St. Brendan's Catholic Cemetery
- 15 Hunt Cemetery
- 16 Old Protestant Cemetery
- 17 New Protestant Cemetery
- 18 Old Schoolhouse (1925)
- 19 Seaman House (1857)
- 20 Dry Stone Wall (2009)
- 21 Invictus Marine Engine (c1902)
- 22 Scenic Lodge & Cabins
- 23 Gneiss Rock Outcrop
- 24 Captain Carnegie House (1896)
- 25 Address Boat Works Mural
- 26 Address Boat Works (1921)
- 27 Customs Building (1934)
- 28 Root's General Store (late 1800's)
- 29 Chinese Friendship Memorial (2009)

Produced by  
the  
*Municipal Heritage Committee*  
of the  
*Township of Leeds and the Thousand Islands*  
in collaboration  
with the  
*Leeds and the Thousand Islands Archives*  
&  
*private donors*



For more images and detailed information about Rockport and its history visit:

[www.rockportthousandislands.com](http://www.rockportthousandislands.com)



or contact:

### Leeds and the Thousand Islands Archives

**Hours:** Thursday 1-8 or by appointment

**Location:** 1367 County Road 2, Escott, ON

**Phone:** (613) 888-1856

**Email:** [archivist@ltiarchives.ca](mailto:archivist@ltiarchives.ca)

**Website:** [www.ltiarchives.ca](http://www.ltiarchives.ca)

**Twitter:** [twitter.com/ltiarchives](https://twitter.com/ltiarchives)

**Facebook:** [facebook.com/ltiarchives](https://facebook.com/ltiarchives)



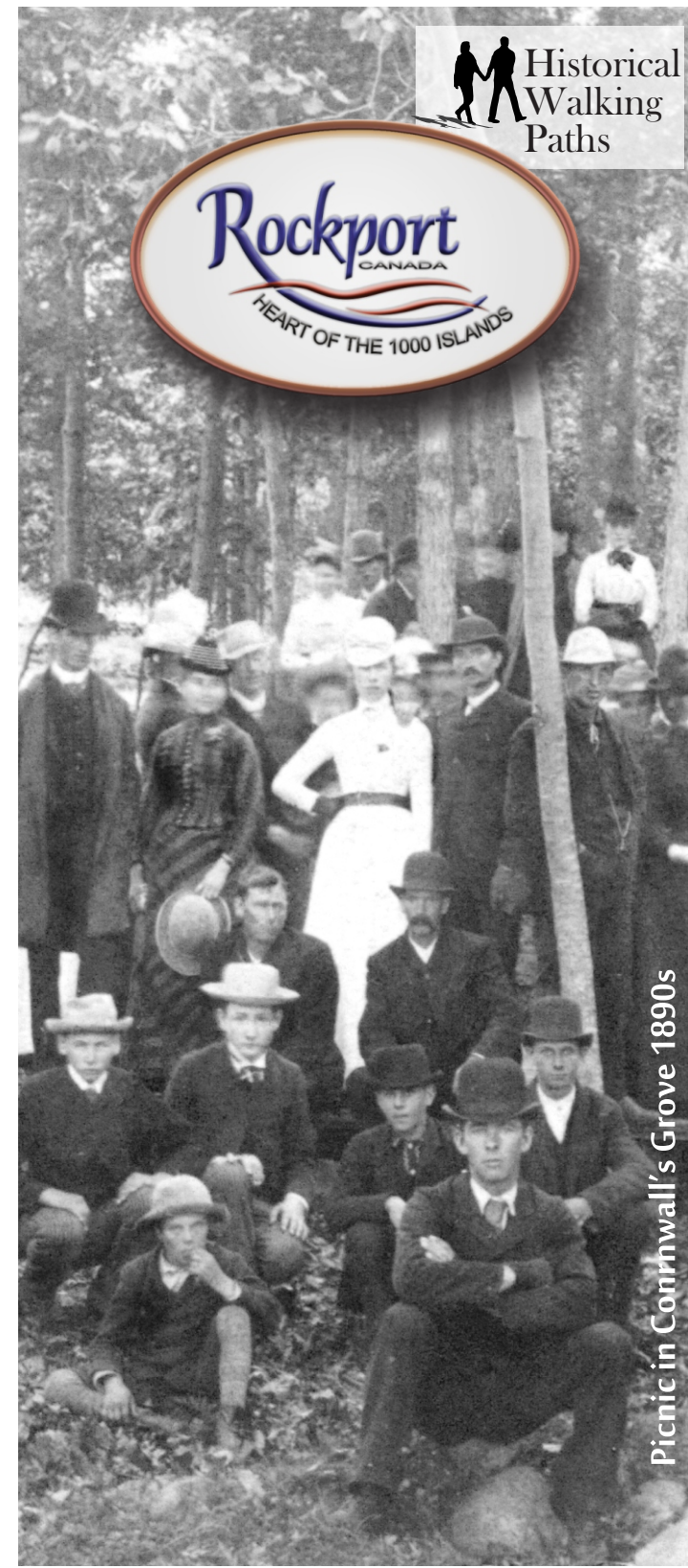
#### Mailing Address:

Leeds & Thousand Islands Archives,  
P.O. Box 332,  
Lansdowne, ON K0E 1L0



Township of  
**Leeds and the  
Thousand Islands**

[www.leeds1000islands.ca](http://www.leeds1000islands.ca)



Picnic in Cornwall's Grove 1890s