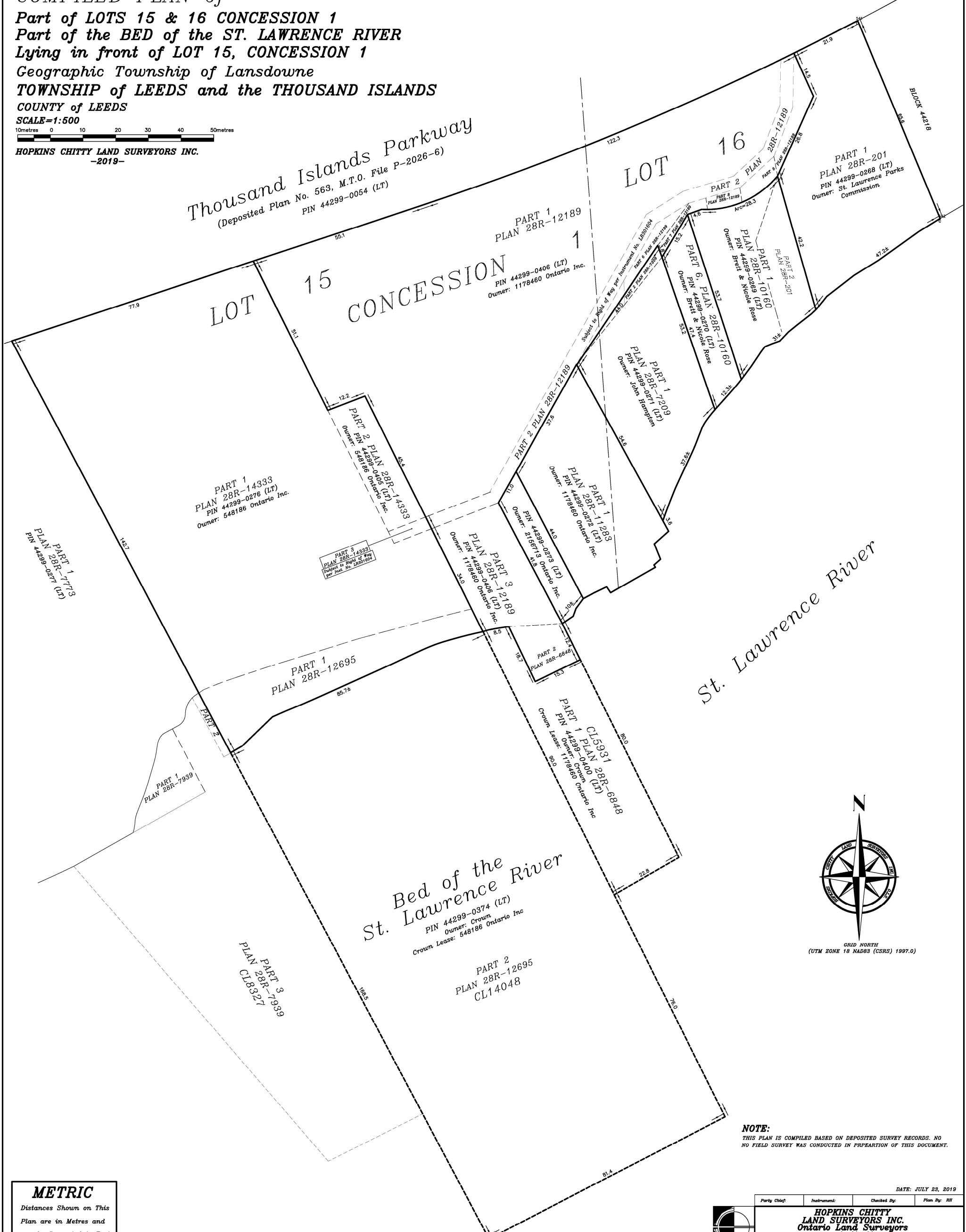


COMPILED PLAN of  
 Part of LOTS 15 & 16 CONCESSION 1  
 Part of the BED of the ST. LAWRENCE RIVER  
 Lying in front of LOT 15, CONCESSION 1  
 Geographic Township of Lansdowne  
 TOWNSHIP of LEEDS and the THOUSAND ISLANDS  
 COUNTY of LEEDS

SCALE=1:500  
 10metres 0 10 20 30 40 50metres

HOPKINS CHITTY LAND SURVEYORS INC.  
 -2019-

Thousand Islands Parkway  
 (Deposited Plan No. 563, M.T.O. File P-2026-6)  
 PIN 44299-0054 (LT)



St. Lawrence River



GRID NORTH  
 (UTM ZONE 18 NAD83 (CSRS) 1997.0)

**NOTE:**  
 THIS PLAN IS COMPILED BASED ON DEPOSITED SURVEY RECORDS. NO  
 NO FIELD SURVEY WAS CONDUCTED IN PREPARATION OF THIS DOCUMENT.

DATE: JULY 23, 2019

**METRIC**  
 Distances Shown on This  
 Plan are in Metres and  
 can be Converted to Feet  
 by Dividing by 0.3048

Party Chgt:	Instrument:	Checked By:	Plan By: RH
<b>HOPKINS CHITTY LAND SURVEYORS INC. Ontario Land Surveyors</b> www.hopkinschitty.com			
654-836 NORRIS COURT KINGSTON, ONTARIO K7P-2R9 Tel (613) 384-9286 Fax (613) 384-3513		PROJECT No. 2019-260 LOTS 15 & 16, CONCESSION 1 TOWNSHIP OF LANDSDOWNE	

