

PLAN OF SURVEY OF  
**PART OF LOTS 15 & 16**  
**CONCESSION 1**  
 Geographic Township Of Lansdowne  
**TOWNSHIP OF LEEDS AND THE THOUSAND ISLANDS**  
**COUNTY OF LEEDS**

SCALE 1 : 200



JORDAN-BENNETT GEOMATICS INC.  
 ONTARIO LAND SURVEYORS

The intended plot size of this plan is 914mm in width by 610mm in height when plotted at a scale of 1:200.

**THOUSAND ISLANDS PARKWAY**  
 DEPOSITED PLAN No. 563 (P-2026-6)  
 PIN 44299-0054(LT)

**PLAN 28R-15499**

Received and deposited

March 17<sup>th</sup>, 2022

Zach Patterson

Representative for the  
 Land Registrar for the  
 Land Titles Division of  
 Leeds (No.28)

SCHEDULE					
PART	PART OF LOT	CON.	PART OF PIN	NAME OF MOST RECENT TRANSFEREE	AREA(Sq.M.)
1	15 & 16	1	44299-0406(LT)	1178460 ONTARIO INC.	1.5
2	16	1	44299-0406(LT)	1178460 ONTARIO INC.	1.5
3	16	1	44299-0406(LT)	1178460 ONTARIO INC.	1.5
4	16	1	44299-0406(LT)	1178460 ONTARIO INC.	1.5
5	16	1	44299-0271(LT)	2156713 ONTARIO LIMITED	1.5
6	16	1	44299-0270(LT)	2156713 ONTARIO LIMITED	1.5

- PART 2 S/T LR301604

LEGEND:

- IB DENOTES IRON BAR
- SSIB DENOTES SHORT STANDARD IRON BAR
- SB DENOTES STANDARD IRON BAR
- CM DENOTES CONCRETE MONUMENT
- DENOTES SURVEY MONUMENT FOUND
- DENOTES SURVEY MONUMENT SET
- MEAS DENOTES MEASURED
- WL DENOTES "WITNESS" MONUMENT
- OJ DENOTES ORIGIN UNKNOWN
- S DENOTES SET
- ORP DENOTES OBSERVED REFERENCE POINT
- P1 DENOTES PLAN 28R-10160
- P2 DENOTES PLAN 28R-12189
- P3 DENOTES PLAN 28R-201(P-2026-57)
- P4 DENOTES PLAN 28R-6948
- P5 DENOTES PLAN 28R-7209

SSIBs WERE SET DUE TO LACK OF OVERBURDEN AND/OR POSSIBLE BURIED UTILITIES IN AREA

NOTES:

BEARINGS ARE UTM GRID, DERIVED FROM OBSERVED REFERENCE POINTS ① & ②. MEASUREMENTS WERE MADE USING REAL TIME NETWORK OBSERVATIONS, UTM ZONE 18, NAD83(CSRS)(2010.0)

ALL DISTANCES AND COORDINATES ON THIS PLAN ARE IN METRES AND CAN BE CONVERTED TO FEET BY DIVIDING BY 0.3048.

DISTANCES ARE GROUND AND CAN BE CONVERTED TO GRID BY MULTIPLYING BY AN AVERAGE COMBINED SCALE FACTOR OF 0.9999674.

FOR BEARING COMPARISONS, A ROTATION FACTOR OF 0°44'00" CLOCKWISE WAS APPLIED TO BEARINGS ON P1, P2, P3, P4 & P5.

Reference Points UTM Zone 18 NAD83 (CSRS)(2010.0) Real-Time Network Observations Coordinates to Rural Accuracy per Sec. 14(2) of O.Reg. 216/10		
Point I.D.	Northing	Easting
ORP ①	4912506.8	418823.5
ORP ②	4912406.0	418740.9

COORDINATES CANNOT, IN THEMSELVES, BE USED TO RE-ESTABLISH CORNERS OR BOUNDARIES SHOWN ON THIS PLAN.

SURVEYOR'S CERTIFICATE

I CERTIFY THAT:

- THIS SURVEY AND PLAN ARE CORRECT AND IN ACCORDANCE WITH THE SURVEY'S ACT, THE SURVEYORS ACT, THE LAND TITLES ACT AND THE REGULATIONS MADE UNDER THEM.
- THE SURVEY WAS COMPLETED ON OCTOBER 25, 2021.

OCTOBER 28, 2021  
 DATE

R.G. BENNETT  
 ONTARIO LAND SURVEYOR

THIS PLAN RELATES TO AOLS PLAN SUBMISSION FORM No. V-17098.

HYDRO ONE NETWORKS

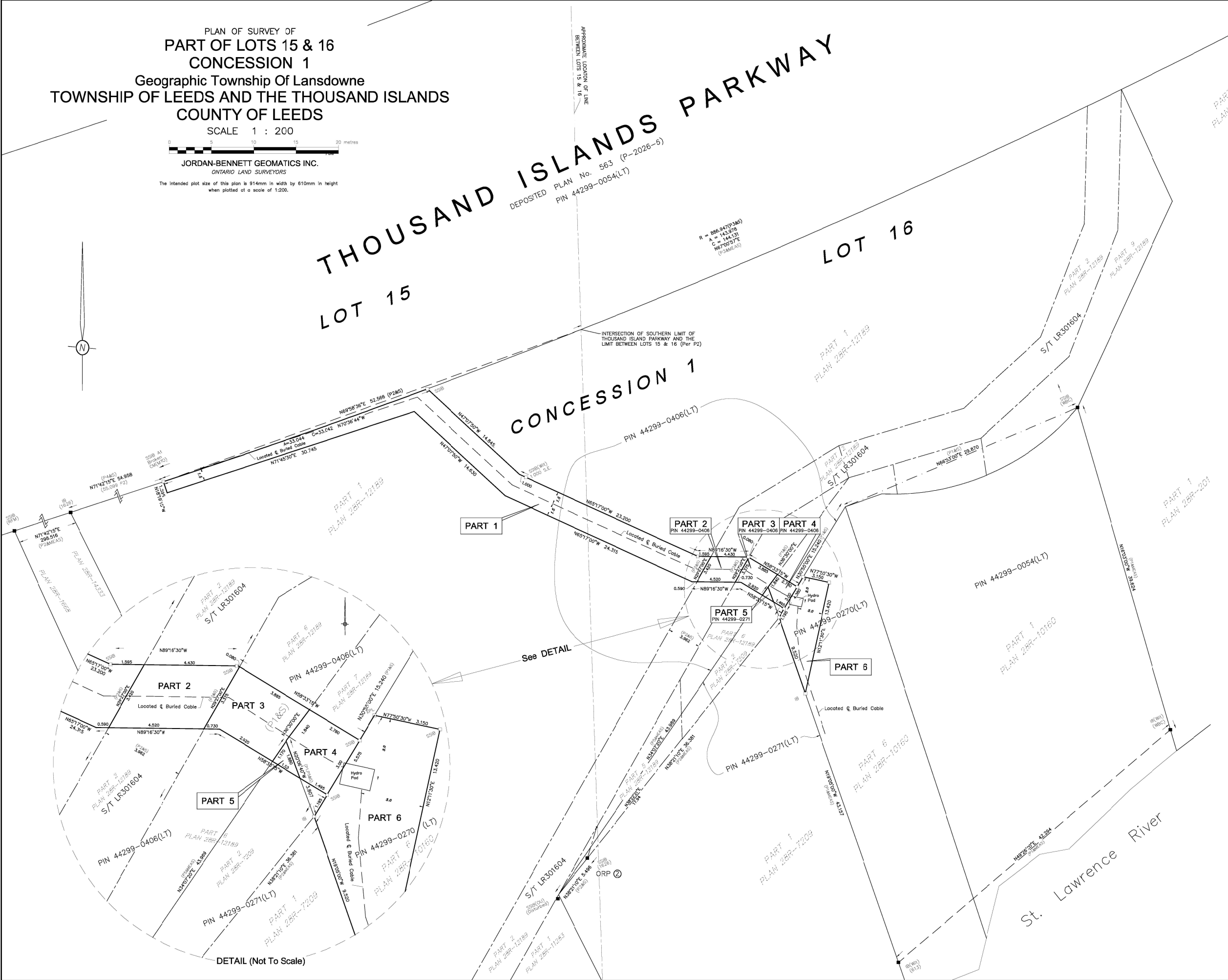
Drawing # L99998 D2S 10162 8829 Job # L9-57



P.O. Box 485  
 33 Parth Street  
 Brockville, Ontario  
 K6V-5V7

Phone: 613-342-7525  
 office@jbg.com

Drawn By: G.B. Party Chief: B.K. Checked By: G.B. File No. 210428



DETAIL (Not To Scale)