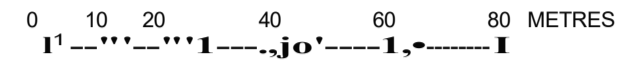


PLAN OF SURVEY
 PART OF LOTS 23 & 24
 CONCESSION 5
 GEOGRAPHIC TOWNSHIP OF LANSDOWNE
 TOWNSHIP OF LEEDS AND THE THOUSAND ISLANDS
 COUNTY OF LEEDS

SCALE= 1 : 1200



IN SURVEYING LTD.
 ONTARIO LAND SURVEYORS

I REQUIRE THIS PLAN TO BE DEPOSITED UNDER THE LAND TITLES ACT.

PLAN 28R /-1.1.Jal
 RECEIVED AND DEPOSITED

MARCH 10, 2022

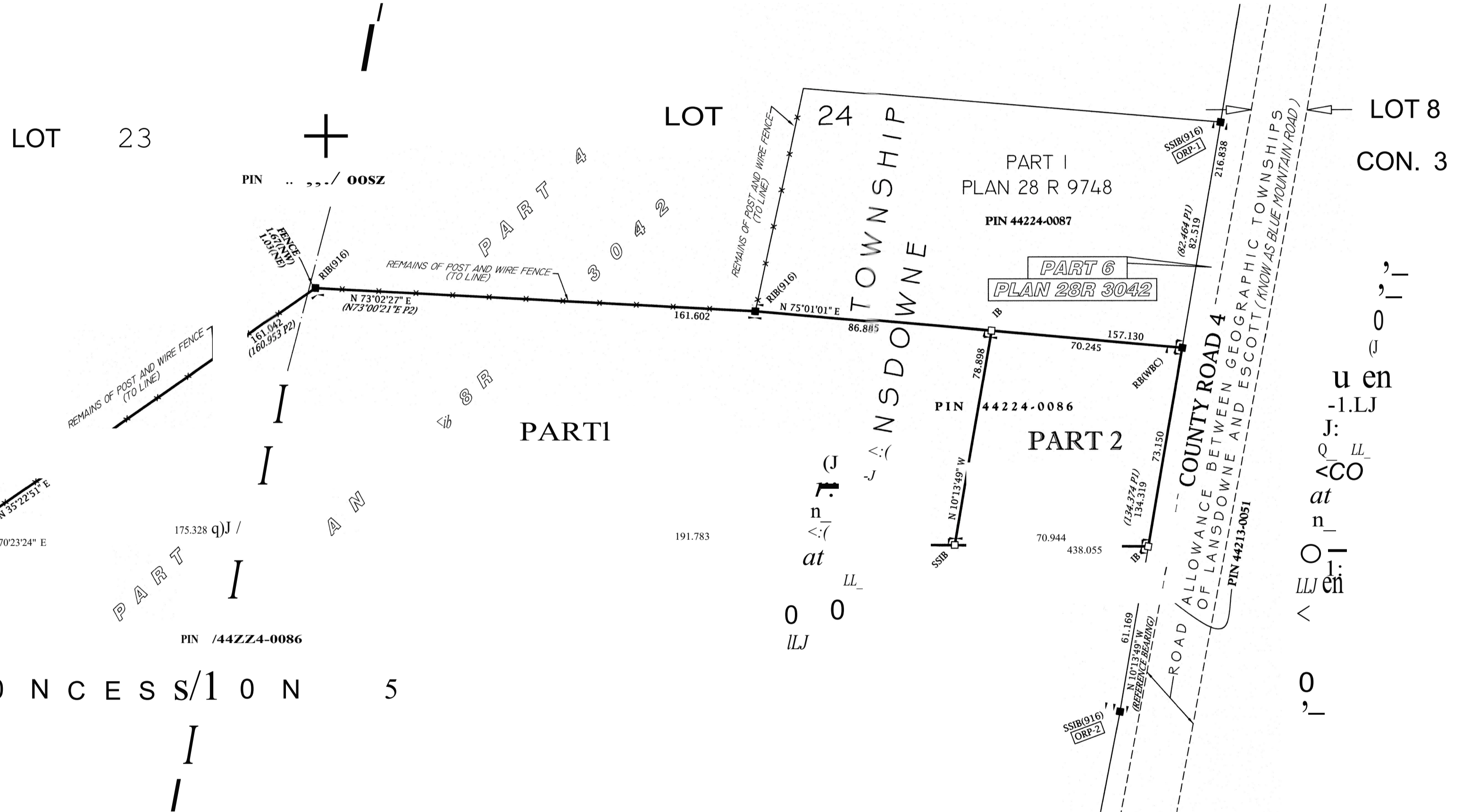
March 15, 2022

J. A. MONAHAN, O.L.S.

P. Richards
 REPRESENTATIVE FOR LAND REGISTRAR FOR THE LAND TITLES DIVISION OF LEEDS (NO. 28)

SCHEDULE

PART	PART OF LOT	CONCESSION	PART OF PIN
1	23 & 24	5	44224-0086
2	24	5	44224-0086



SURVEY INTEGRATION NOTES:

- THE INFORMATION PROVIDED ON THIS SURVEY COMPLIES WITH SECTION 14(1) & (2) SUCH THAT THE COORDINATES ARE ACCURATE, AT THE 95% CONFIDENCE LEVEL, TO 1.00 METRES IN REMOTE AREAS.
- COORDINATES HAVE BEEN DIRECTLY OBSERVED USING GPS:
 - REAL TIME NETWORK (RTN) COORDINATES FROM CAN-NET NETWORK
- DISTANCES ON THIS PLAN ARE HORIZONTAL GROUND DISTANCES AND CAN BE CONVERTED TO GRID DISTANCES BY MULTIPLYING BY THE AVERAGE COMBINED SCALE FACTOR OF 0.99965916.

SURVEY NOTES:

- BEARINGS ARE UTM GRID DERIVED FROM GPS • REAL TIME NETWORK (RTN) OBSERVATIONS ON MONUMENTS ORP-1 AND ORP-2, HAVING A GRID BEARING OF N 10°13'49" W, NAD83 (CSRS 1997.0) AND ARE REFERRED TO THE CENTRAL MERIDIAN IN UTM ZONE 18 (75°W).
- SHORT STANDARD IRON BAR(S) (SSIB) WERE USED DUE TO INSUFFICIENT OVERBURDEN.
- DISTANCES AND COORDINATES ILLUSTRATED ON THIS PLAN ARE IN METRES AND CAN BE CONVERTED TO FEET BY DIVIDING BY 0.3048.

LEGEND

□	DENOTES PLANTED MONUMENT	RB	DENOTES ROCK BAR
■	DENOTES FOUND MONUMENT	CC	DENOTES CUT CROSS
SIB	DENOTES STANDARD IRON BAR	IP	DENOTES IRON PIPE
SSIB	DENOTES SHORT STANDARD IRON BAR	WIT	DENOTES WITNESS
IB	DENOTES IRON BAR	FN	DENOTES FIELD NOTES
RIB	DENOTES ROUND IRON BAR	--x--	DENOTES FENCE
CM	DENOTES CONCRETE MONUMENT	CON.	DENOTES CONCESSION
(N)	DENOTES DIRECTION (NORTH, EAST, SOUTH & WEST)		
P1	DENOTES PLAN 28R - 9748		
P2	DENOTES PLAN 28R - 3042		
(916)	DENOTES A.J. FLATMAN O.L.S.		
(WBC)	DENOTES COLLETT SURVEYING LTD.		

BEARINGS ARE UTM GRID DERIVED FROM GPS • REAL TIME NETWORK (RTN) OBSERVATIONS. FOR BEARING COMPARISONS A ROTATION FACTOR WAS APPLIED TO CONVERT TO UTM BEARINGS, AS NOTED BELOW.

PLAN ID.	BEARING ROTATION	DIRECTION
P1	00°38'21"	CLOCKWISE
P2	00°36'41"	CLOCKWISE

ALL COORDINATES ARE IN METRES, ARE RELATED TO UTM ZONE 18 (75°W LONGITUDE) NAD83 CSRS AND HAVE A RELATIVE ACCURACY TO MEET THE REQUIREMENTS OF A REMOTE AREA AT A 95% CONFIDENCE LEVEL. OBSERVED REFERENCE POINT (ORP) OR SPECIFIED CONTROL POINT (SCP)

POINT ID.	POINT DESC.	NORTHING (N)	EASTING (E)
ORP#1	SSIB(916)	4923840.733	421357.995
ORP#2	SSIB(916)	4923627.423	421396.492

THE COORDINATE(S) ILLUSTRATED CANNOT, THEMSELVES, BE USED TO RE-ESTABLISH THE CORNERS OR BOUNDARIES SHOWN ON THIS PLAN.

SURVEYOR'S CERTIFICATE

- I CERTIFY THAT:
- THIS SURVEY AND PLAN ARE CORRECT AND IN ACCORDANCE WITH THE SURVEYS ACT, THE SURVEYORS ACT AND THE LAND TITLES ACT AND THE REGULATIONS MADE UNDER THEM.
 - THE SURVEY WAS COMPLETED ON THE 18TH DAY OF JANUARY, 2022.

MARCH 8, 2022.

J. A. MONAHAN
 ONTARIO LAND SURVEYOR

IN ENGINEERING+ SURVEYING
 SUITE #205, 51 KING ST. E. - BROCKVILLE, ONTARIO K6V 1A8
 TEL. 613-342-2611
 E-MAIL: info@ineng.ca
 www.inengineering.ca

MAP CHECK: J.M. | PTY. CH: M.S. | DRN. BY: N.E./M.M. | FILE NO.: 11078 MR