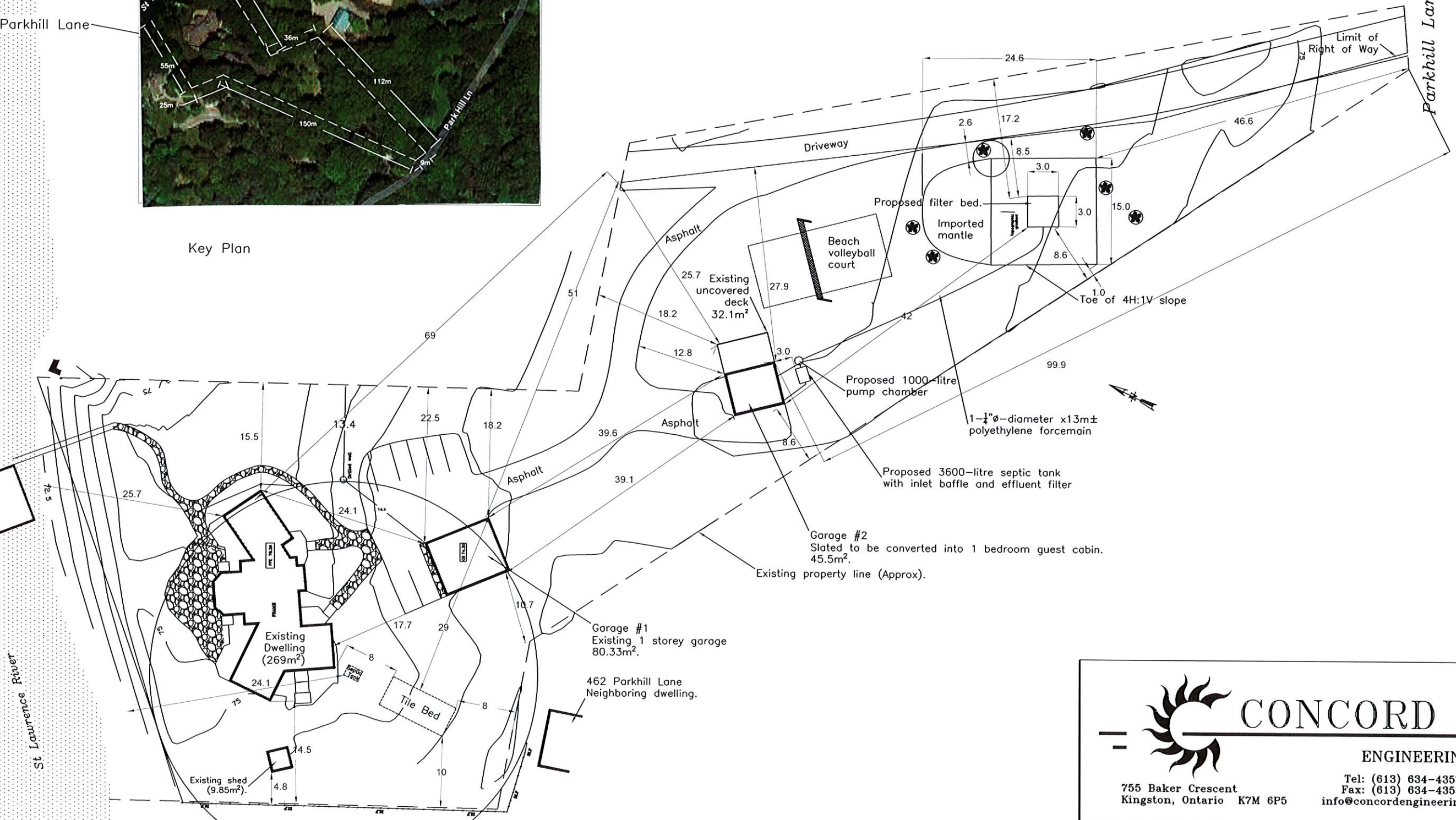


Key Plan

474 Parkhill Lane

Parkhill Lane



St. Lawrence River

All dimensions in meters

**CONCORD**  
ENGINEERING

755 Baker Crescent  
Kingston, Ontario K7M 6P5

Tel: (613) 634-4357  
Fax: (613) 634-4353  
info@concordengineering.ca

Project: Proposed Renovation

474 Parkhill Lane  
Hill Island, Ontario

Drawing: Site Plan

Client: George Borg

Designer: Dwn by: CS Chd by: Date: 12-Mar-24

Notes:

Construction per Ontario Building Code 2012 as amended  
Contractor to confirm all dimensions

Minimum setbacks for distribution pipes:  
6 metres from property line  
8 metres from dwelling  
18 metres from river

Minimum setbacks for tanks  
15 metres from river  
3 metres from property line  
1.5 metres from dwelling

Sewers PVC CSA B182.1 4" DR35  
Forcemain polyethylene CSA B137.1 1-1/4" 75 psi - red stripe

Septic Tank  
3600-litres minimum capacity  
completed with 2 access manholes,  
inlet baffle and effluent filter

Pump Chamber  
450-litre minimum capacity  
Provide circuit and wiring for 115V effluent pump  
Meyers ME-3F or approved equivalent provide spare pump.  
On demand controller with high level alarm and beacon on a circuit  
separate from the pump circuit  
Minimum dosing volume 90 litres plus any back-drain from forcemain

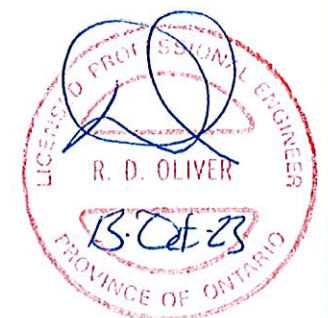
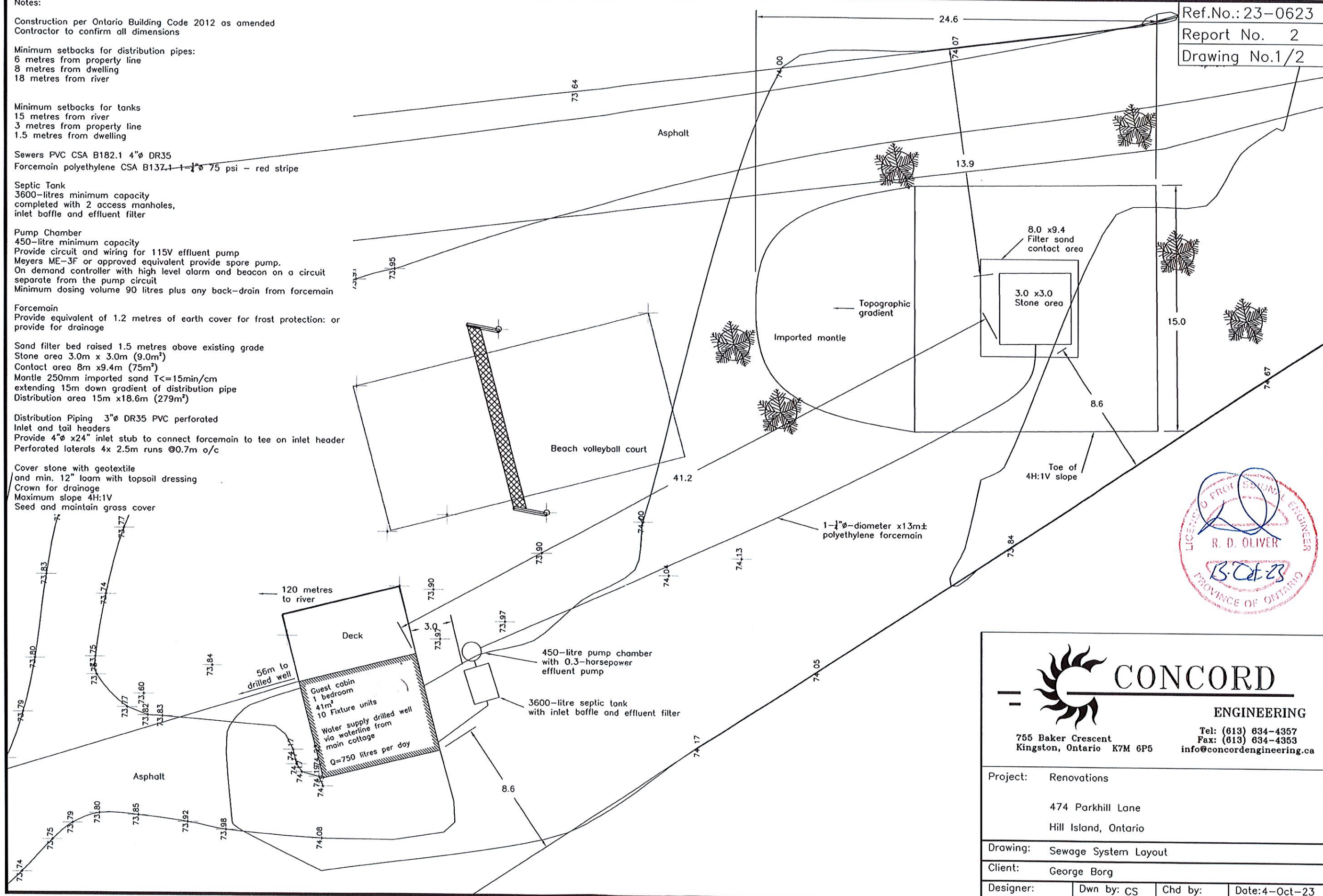
Forcemain  
Provide equivalent of 1.2 metres of earth cover for frost protection: or  
provide for drainage


Sand filter bed raised 1.5 metres above existing grade  
Stone area 3.0m x 3.0m (9.0m<sup>2</sup>)  
Contact area 8m x 9.4m (75m<sup>2</sup>)  
Mantle 250mm imported sand T<=15min/cm  
extending 15m down gradient of distribution pipe  
Distribution area 15m x 18.6m (279m<sup>2</sup>)

Distribution Piping 3" DR35 PVC perforated  
Inlet and tail headers  
Provide 4" x 24" inlet stub to connect forcemain to tee on inlet header  
Perforated laterals 4x 2.5m runs @0.7m o/c

Cover stone with geotextile  
and min. 12" loam with topsoil dressing  
Crown for drainage  
Maximum slope 4H:1V  
Seed and maintain grass cover

Ref.No.: 23-0623  
Report No. 2  
Drawing No.1/2





# CONCORD

ENGINEERING

755 Baker Crescent  
Kingston, Ontario K7M 6P5

Tel: (613) 634-4357  
Fax: (613) 634-4353  
info@concordengineering.ca

Project: Renovations	
474 Parkhill Lane Hill Island, Ontario	
Drawing: Sewage System Layout	
Client: George Borg	
Designer:	Dwn by: CS    Chd by:    Date: 4-Oct-23