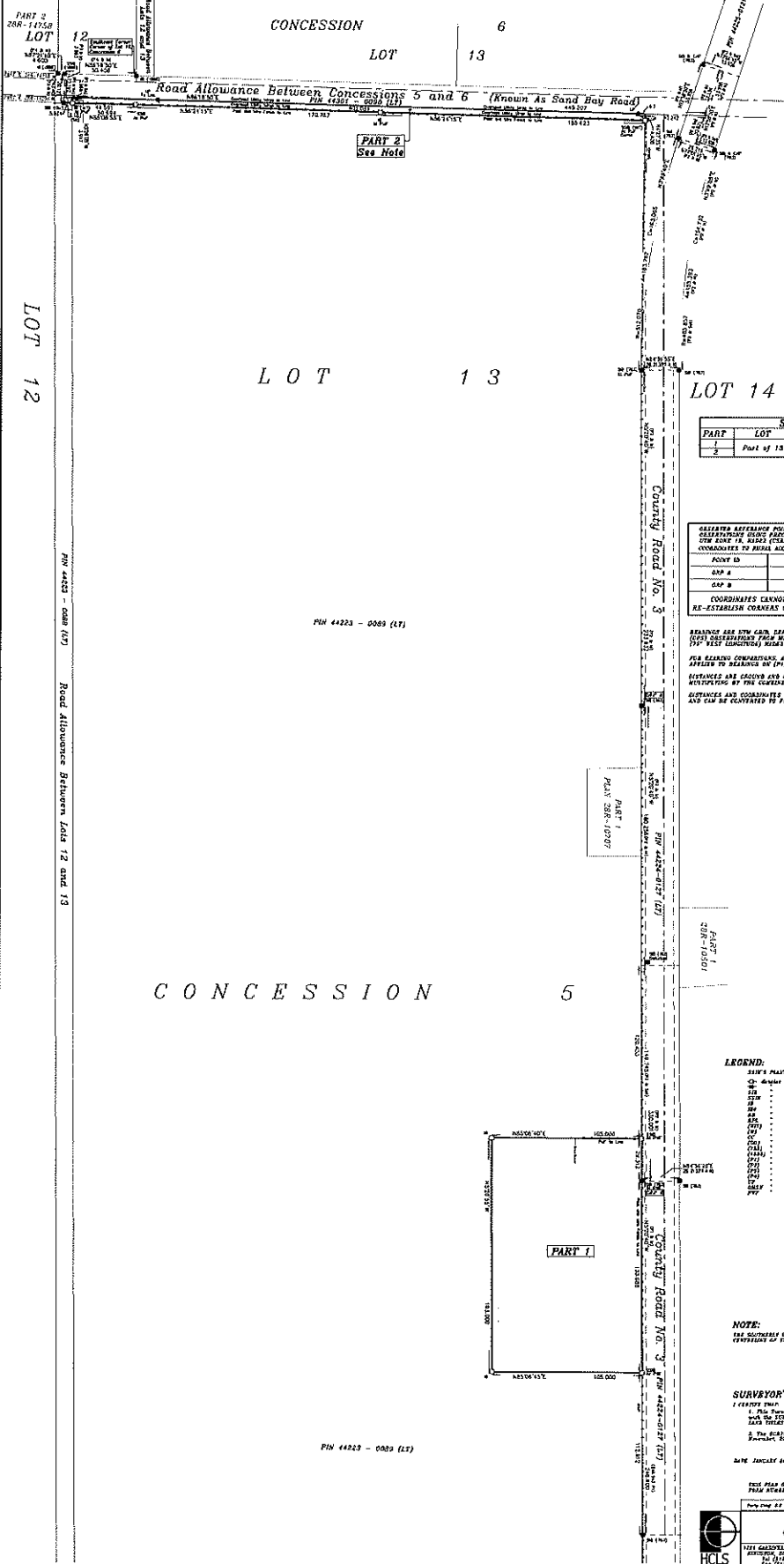


PLAN of SURVEY of
 PART OF LOT 13, CONCESSION 5
 Geographic Township of Lansdowne
 TOWNSHIP OF LEEDS AND THE THOUSAND ISLANDS
 COUNTY OF LEEDS

Scale = 1:1250
 HOPKINS CHITTY LAND SURVEYOR'S INC.
 -2024-

THE INTERIOR POINT SIZE OF THIS PLAN IS 11MM IN HEIGHT
 BY 410MM IN WIDTH WHEN PRINTED AT A SCALE OF 1:1250

PLAN 28R-15842
 Received and deposited
 February 15, 2024
 Janelle Blaney
 Representative for the
 Land Register for the
 Land Titles Division of
 Leeds (No.28)



SCHEDULE			
PART	LOT	CON.	PIN No.
1	Part of 13	5	44223-0003(13)
2			

POINT ID	BORING	DEPTH
CAP A	422011 06	416811.58
CAP B	422012 05	416812.21

COORDINATES CANNOT BE USED TO RE-ESTABLISH CORNERS OR BOUNDARIES SHOWN ON THIS PLAN.

BEARINGS ARE IN CW AND DISTANCES FROM MULTIPLE REAL TIE POINTS (CROSS INTERSECTIONS FROM MONUMENTS) TO 'D' OR 'E'. THE SCALE IS 1:1250 (NORTH) UNLESS OTHERWISE SPECIFIED.

ALL BEARING CORRECTIONS: A ROTATION OF 0.14133' CLOCKWISE HAS APPLIED TO BEARINGS ON SP1 & SP2.

DISTANCES ARE GROUND AND CAN BE CONVERTED TO GRID BY MULTIPLYING BY THE CURVED SCALE FACTOR OF 0.9997416.

BORINGS AND COORDINATES SHOWN ON THIS PLAN ARE IN METRES AND CAN BE CONVERTED TO FEET BY DIVIDING BY 0.3048.

- LEGEND:**
- CH - double line - Planned Property Boundary
 - SP - single line - Survey Boundary
 - STB - dashed line - Standard Iron Bar
 - STC - dashed line - Cast Iron Standard Pipe Cap
 - STP - dashed line - Steel Pipe (Pneum.)
 - STQ - dashed line - Steel Pipe (Water)
 - STW - dashed line - Steel Pipe (Waste)
 - STX - dashed line - Steel Pipe (Gas)
 - STY - dashed line - Steel Pipe (Oil)
 - STZ - dashed line - Steel Pipe (Other)
 - STAA - dashed line - Steel Pipe (Asphalt)
 - STAB - dashed line - Steel Pipe (Bitum.)
 - STAC - dashed line - Steel Pipe (Concrete)
 - STAD - dashed line - Steel Pipe (Cement)
 - STAE - dashed line - Steel Pipe (Clay)
 - STAF - dashed line - Steel Pipe (Glass)
 - STAG - dashed line - Steel Pipe (Rubber)
 - STAH - dashed line - Steel Pipe (Synth.)
 - STAI - dashed line - Steel Pipe (Wood)
 - STAJ - dashed line - Steel Pipe (Other)
 - STAK - dashed line - Steel Pipe (Unkn.)
 - STAL - dashed line - Steel Pipe (No. 1)
 - STAM - dashed line - Steel Pipe (No. 2)
 - STAN - dashed line - Steel Pipe (No. 3)
 - STAO - dashed line - Steel Pipe (No. 4)
 - STAP - dashed line - Steel Pipe (No. 5)
 - STAQ - dashed line - Steel Pipe (No. 6)
 - STAR - dashed line - Steel Pipe (No. 7)
 - STAS - dashed line - Steel Pipe (No. 8)
 - STAT - dashed line - Steel Pipe (No. 9)
 - STAU - dashed line - Steel Pipe (No. 10)
 - STAV - dashed line - Steel Pipe (No. 11)
 - STAW - dashed line - Steel Pipe (No. 12)

NOTE:
 THE SCHEDULED PART OF PART 1 HAS NOT BEEN LAYED OUT
 EXCEPT FOR THE BOUNDARY MARKS SHOWN ON THIS PLAN.

SURVEYOR'S CERTIFICATE:
 I CERTIFY THAT
 1. This Survey and Plan are correct and in accordance
 with the SURVEY ACT, the SURVEY REGULATIONS and the
 LAND TITLES ACT and the SURVEYOR'S OATH made under them.
 2. The SURVEY was completed on the 14th day of
 February, 2024.

BY ME: JANUARY 14, 2024
 Janelle Blaney
 JANELLE BLANEY - O.C.S.

THIS PLAN IS SUBJECT TO THE PLAN PERMISSIONS
 FROM REGIONS P-4011

Plan No. 28
 Volume 22
 Plan No. 28

**HOPKINS CHITTY
 LAND SURVEYOR'S INC.**
 Ontario Land Surveyors
 www.hopkinschitty.com

1211 GARDNER ROAD SUITE 102
 MISSISSAUGA, ONTARIO L4X 1L7
 TEL: (905) 271-3344
 FAX: (905) 271-3345

PROPERTY NO. 28R-15842
 LOT 13, CONCESSION 5
 TOWNSHIP OF LEEDS