



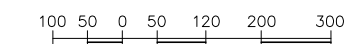
# Zoning By-Law No. 07-079

## Township of Leeds and the Thousand Islands

### Lansdowne, Maple Grove and Outlet

#### Schedule "F"

Scale 1:5000



#### Zone Classifications:

First Density Residential	<b>R1</b>	Mineral Resource, Aggregate	<b>MRA</b>
Second Density Residential	<b>R2</b>	Wrecking Yard	<b>WY</b>
Hamlet Residential	<b>RH</b>	Waste Management	<b>WM</b>
Rural Residential	<b>RR</b>	Sewage Disposal	<b>SD</b>
Shoreline Residential	<b>RS</b>	Flood Plain	<b>FP</b>
Island Residential	<b>RI</b>	Area of Natural and Scientific Interest	<b>ANSI</b>
Mobile Home Park Residential	<b>RMP</b>	Species at Risk	<b>SR</b>
Floating Residential	<b>RF</b>	Parking Lot	<b>PL</b>
General Commercial	<b>CG</b>	Provincially Significant Wetland	<b>PSW</b>
Highway Commercial	<b>CH</b>	Locally Significant Wetland	<b>LSW</b>
Tourist Commercial	<b>CT</b>	Sensitive Lake Trout Lakes (Charleston and Red Horse) See Section "3.29"	
Recreational Commercial	<b>CR</b>	Land within 120m of a PSW zone, 200m of a SR zone, 50m of an ANSI zone or 50m of a LSW zone are regulated in accordance with Section '3.30(c)' of this By-law.	
Light Industrial	<b>ML</b>	All Crown beds of waterbodies up to the high water mark are zoned Environmental Protection (EP) unless otherwise indicated.	
Rural Industrial	<b>MR</b>		
Institutional	<b>I</b>	Unless otherwise indicated all islands are zoned Island Residential (RI).	
Open Space	<b>OS</b>		
Agricultural	<b>AG</b>		
Rural	<b>RU</b>	<b>Boundaries:</b>	
Mineral Resource, Pit	<b>MRP</b>	Zone Boundary	
Mineral Resource, Quarry	<b>MRQ</b>	Municipal Boundary	
Mineral Resource, Bedrock	<b>MRB</b>	Village Boundary	
Mineral Resource, Wollastonite	<b>MRW</b>	Sub-Schedule Boundary	

