



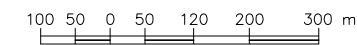
Zoning By-Law No. 07-079

Township of Leeds and the Thousand Islands

Lyndhurst and Seeley's Bay

Schedule "G"

Scale 1:5000



Zone Classifications:

- First Density Residential
- Second Density Residential
- Hamlet Residential
- Rural Residential
- Shoreline Residential
- Island Residential
- Mobile Home Park Residential
- Floating Residential
- General Commercial
- Highway Commercial
- Tourist Commercial
- Recreational Commercial
- Light Industrial
- Rural Industrial
- Institutional
- Open Space
- Agricultural
- Rural
- Mineral Resource, Pit
- Mineral Resource, Quarry
- Mineral Resource, Bedrock
- Mineral Resource, Wollastonite
- Mineral Resource, Aggregate

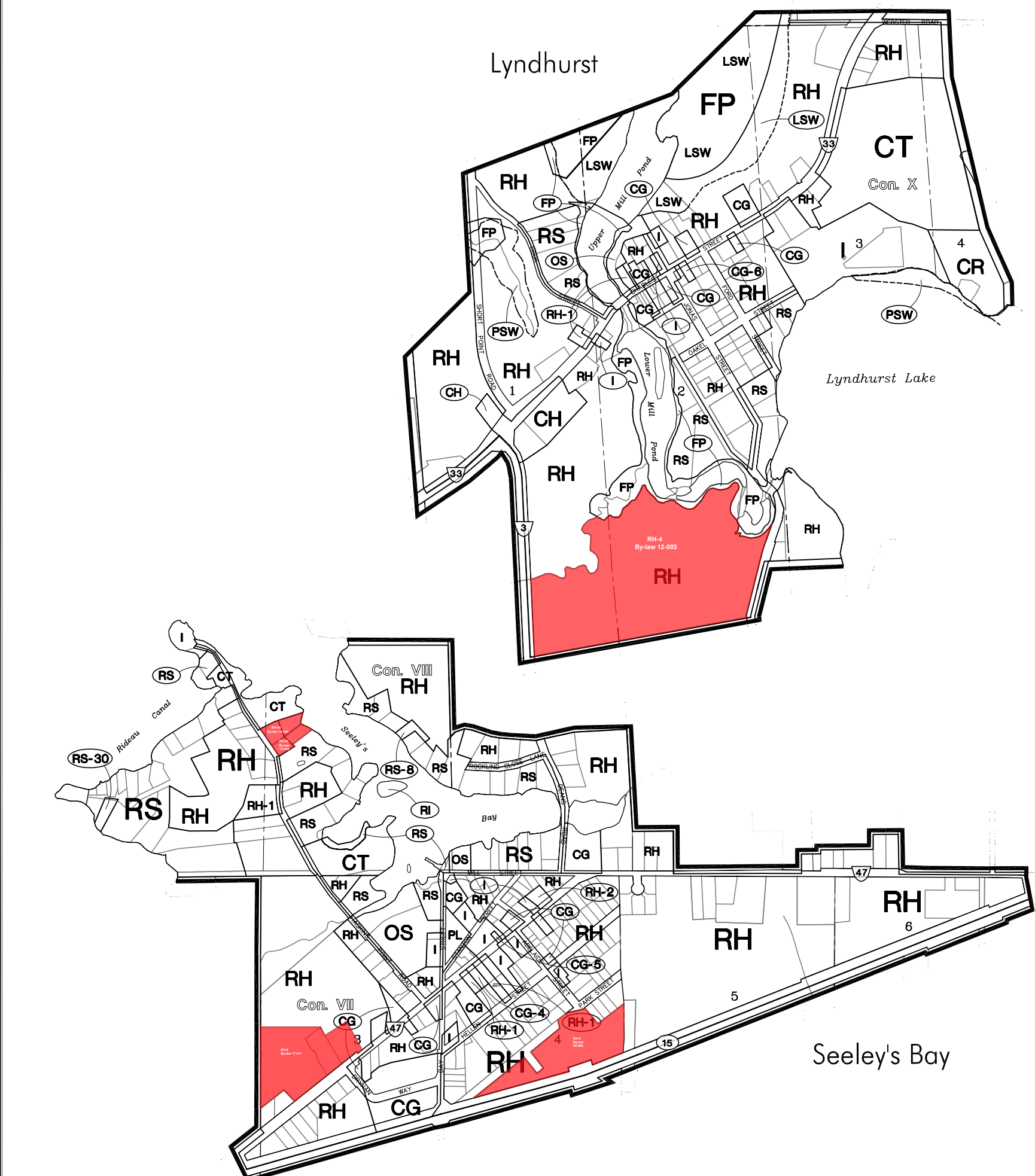
- R1
- R2
- RH
- RR
- RS
- RI
- RMP
- RF
- CG
- CH
- CT
- CR
- ML
- MR
- I
- OS
- AG
- RU
- MRP
- MRQ
- MRB
- MRW
- MRA

- Wrecking Yard
- Waste Management
- Sewage Disposal
- Flood Plain
- Area of Natural and Scientific Interest
- Species at Risk
- Parking Lot
- Provincially Significant Wetland
- Locally Significant Wetland
- Sensitive Lake Trout Lakes (Charleston and Red Horse) See Section "3.29"
- Land within 120m of a PSW zone, 200m of a SR zone, 50m of an ANSI zone or 50m of a LSW zone are regulated in accordance with Section '3.30(c)' of this By-law.
- All Crown beds of waterbodies up to the high water mark are zoned Environmental Protection (EP) unless otherwise indicated.
- Unless otherwise indicated all islands are zoned Island Residential (RI).

- WY
- WM
- SD
- FP
- ANSI
- SR
- PL
- PSW
- LSW

Boundaries:

- Zone Boundary
- Municipal Boundary
- Village Boundary
- Sub-Schedule Boundary



Revised: 28/11/07
Revised: 06/06/07
Date Prepared: 19/06/06
JLR No: 21063

